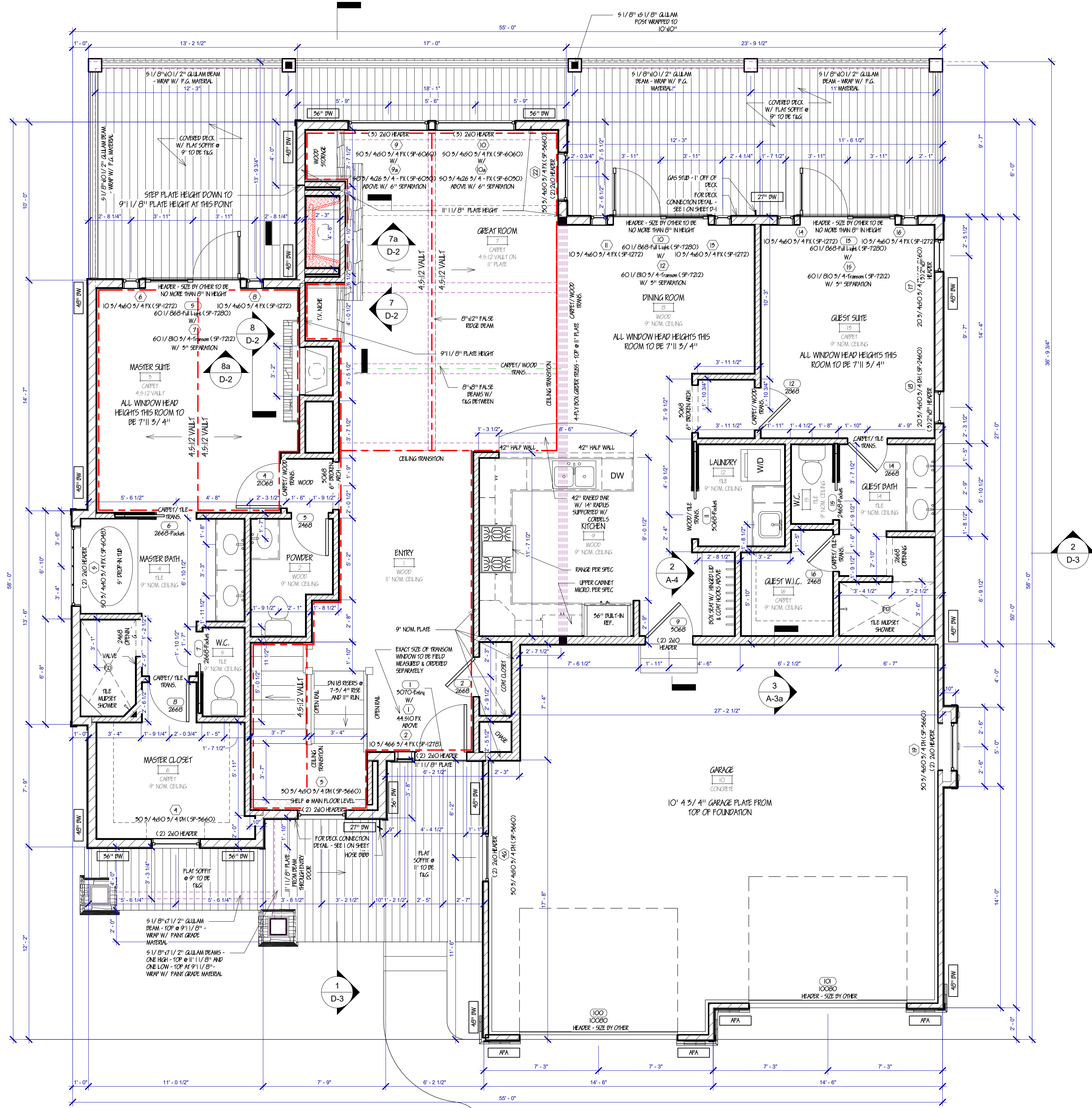
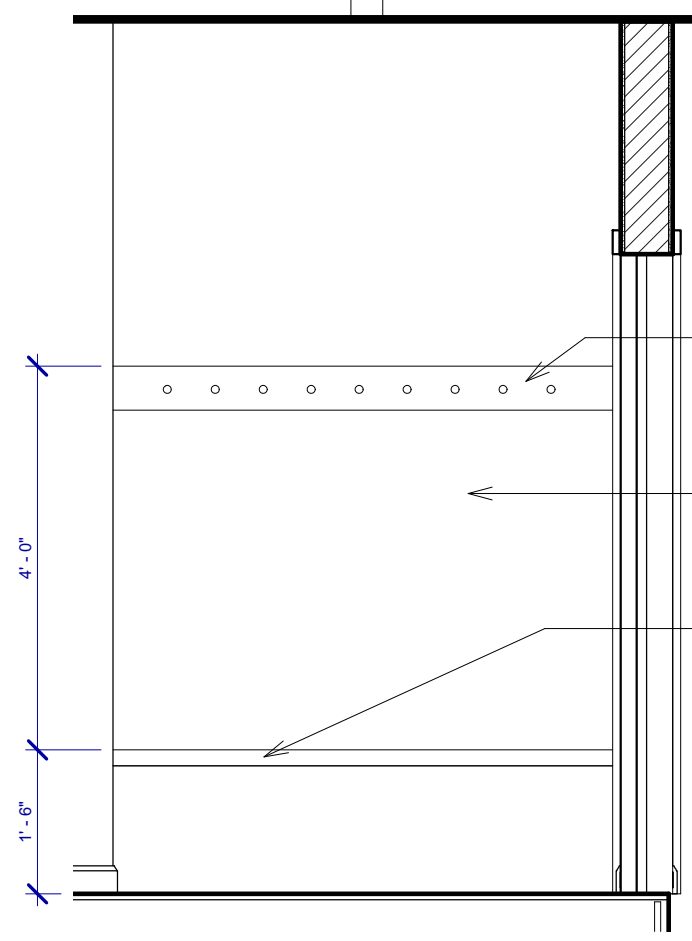


10/22/2018 8:16:00 PM E:\Dyphus\CUSTOMHOUSEPLANS\HOUSES\BluePrints\1 Story Plans\1806 Copper Creek-3B-Basement-RVT-CMD Plans\Copper Creek TRS.rvt

2 BENCH DETAIL
1/2" = 1'-0"



1 MAIN LEVEL PLAN
1/4" = 1'-0"

- 6/19/08 - Add Hydraulic Ramp per E-MAIL (1/1/08)
9/1/08 - 101 (5/02/08)
5/17/08 - Finish Mod per Photo Call w/ Paul 5/17/08
9/14/08 - 101 (5/02/08) / Field Review (Field Review 5/11/08)
2/21/08 - 1-5 Redline
1/10/08 - Adjust Fireplace R/O / Adjust Powder Wall
1/17/08 - Add Chimney, Hvac Blows & Gas Stub / Move Guest Suite Window
12/12/07 - Adjust Plans For 1-5 Redline
1/10/08 - Adjust Fireplace R/O / Adjust Powder Wall
11/28/07 - Convert Windows to Storm Panels
11/19/07 - 1-5 Redline
10/22/07 - Review Floors & Trusses
10/19/07 - Remove Fanlight
10/19/07 - Update Fireplace Spec
10/5/07 - Flip to Garage Right
9/28/07 - Review Comments
8/30/07 - Update Windows

ADDRESS:
LOCATION:
JOB NO:

SQUARE FOOTAGE table with columns for Main Floor, Upper Floor, Bonus Room, Basement Unfinished, Total Finished, Garage, Basement Plate Ht., Main Flr. Plate Ht., Upper Flr. Plate Ht.

PROJECT NAME:

Copper Creek

MODEL

Revision table with columns for REV, DATE, and description.

PERMIT DATE: Issue Date

SCALE: As indicated

DRAWN BY: TJS

SHEET NAME: MAIN LEVEL PLAN

SHEET NUMBER

A-4

All ideas, designs, arrangements, drawings, and plans depicted on this sheet are the original work product of, and are the property of Todd J. Sullivan Custom Houseplans, Inc. No part of this drawing may be reproduced, stored in a retrieval system, or transmitted in any form or by any means, without written permission of Custom Houseplans, Inc. All square footage figures shown on these plans are approximate in nature. These plans are not intended to depict dimensions or construction relationships with complete accuracy. These plans may include figures or objects that have been inserted for artistic purposes only.

TODD J. SULLIVAN, JD Custom Designer | Builder customhouseplans.house

Todd J. Sullivan CustomHouseplans.house