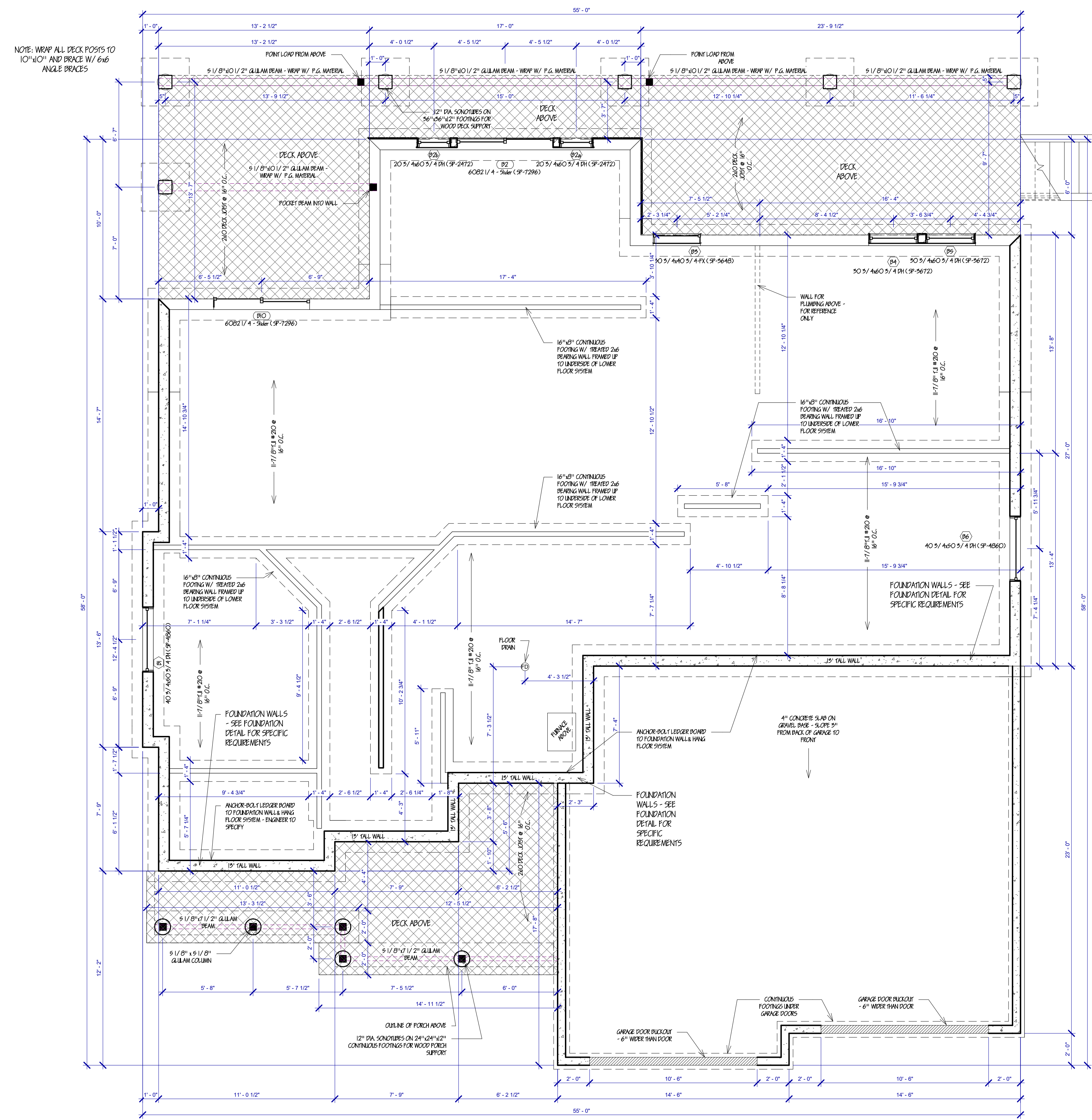
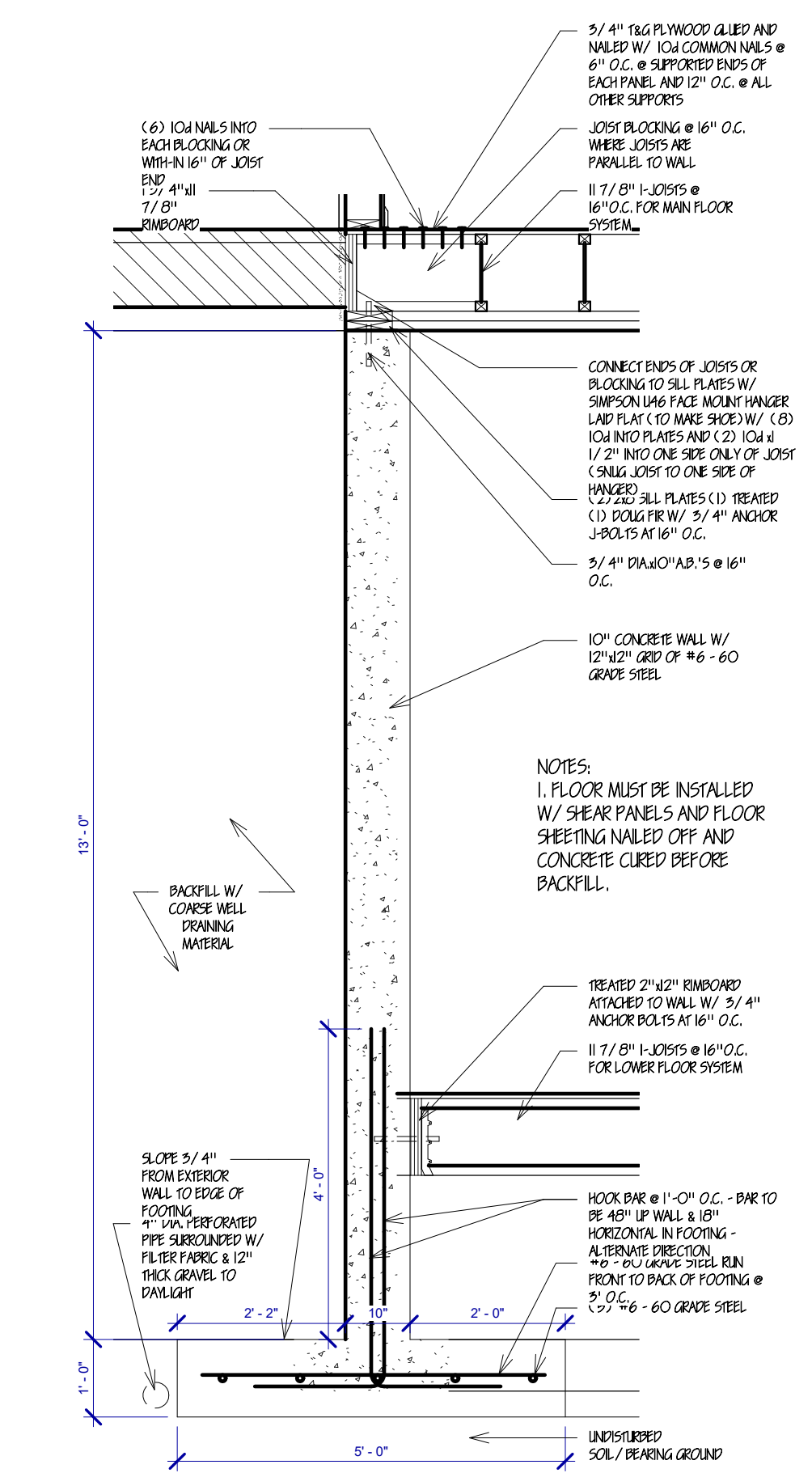


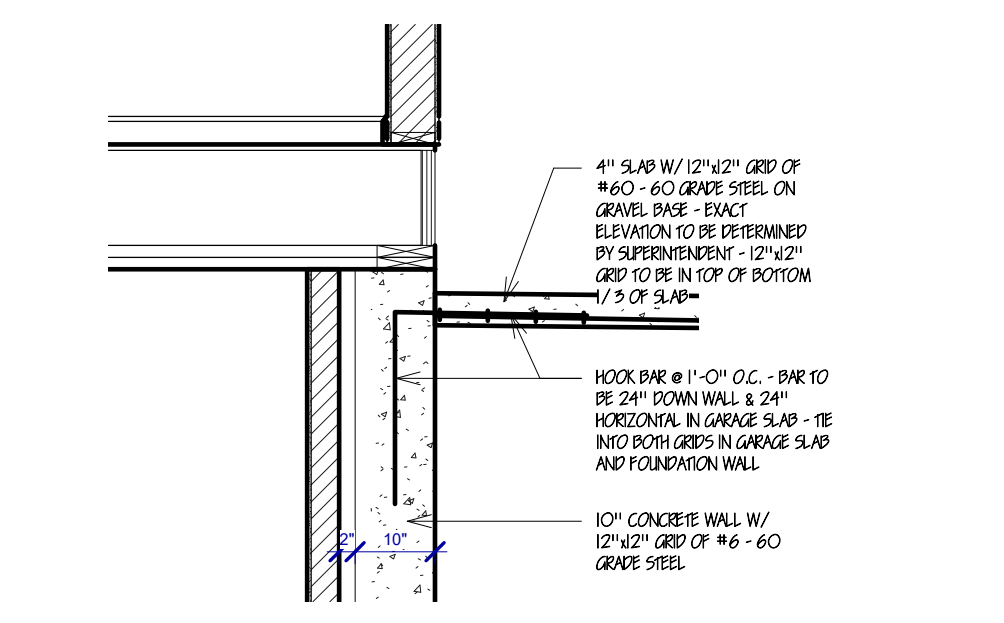
E:\Dyphus\CUSTOMHOUSEPLANS\HOUSE\BluePrints\1 Story Plans\1806 Copper Creek-3B-Basement-RPT-CMD Plans\Copper Creek TRS.rvt
10/22/2018 8:13:55 PM



1 FOUNDATION PLAN
1/4" = 1'-0"



2 13' FOUNDATION WALL DETAIL
1/2" = 1'-0"



3 GARAGE FOUNDATION CONNECTION DETAIL
1/2" = 1'-0"

All ideas, designs, arrangements, drawings, and plans depicted on this sheet are the original work product of, and are the property of Todd J. Sullivan Custom Houseplans, No. 1806 Copper Creek, Copper Creek, TN 37025. No part of this document may be reproduced, stored in a retrieval system, or transmitted in any form or by any means, without written permission of Todd J. Sullivan Custom Houseplans. All square footage figures shown on these plans are approximate in nature. These plans are not intended to depict dimensions or construction relationships with complete accuracy. These plans may include figures or objects that have been inserted for artistic purposes only.

Todd J. Sullivan
CustomHouseplans.house



ADDRESS:
LOCATION:
JOB NO:

SQUARE FOOTAGE

Main Floor:	1806 SF
Upper Floor:	0 SF
Bonus Room:	0 SF
Basement Finished:	0 SF
Basement Unfinished:	1806 SF
Total Finished:	1806 SF
Garage:	683 SF
Basement Plate Ht.	10'-0" Nom.
Main Flr. Plate Ht.	9'-1.18"
Upper Flr. Plate Ht.	N/A

PROJECT NAME:
Copper Creek
MODEL

REV	DATE
▲	-
▲	-
▲	-
▲	-
▲	-
▲	-
▲	-
▲	-
▲	-
▲	-

PERMIT DATE:
Issue Date

SCALE:
As indicated

DRAWN BY:
TJS

SHEET NAME:
FOUNDATION PLAN

SHEET NUMBER
A-3a

- 6/1/08 - Add Hydraulic Ramp per E-Mail (1/4/08)
- 5/1/08 - 101 (5/02/08)
- 2/1/08 - 15 Redline
- 5/1/08 - Fresh Mail per Phone Call w/ Paul 5/1/08
- 5/1/08 - 101 (5/02/08) / Paul Redline (E-mail Comment 5/1/08)
- 2/1/08 - 15 Redline
- 1/10/08 - Adjust Fireplace R/O / Adjust Powder Wall
- 1/7/08 - Add Details, Hour Bldgs & Gate Subj - Allow Gate Subj Window
- 12/12/07 - Adjust Plans Per 1.5 E-mail
- 11/10/08 - Adjust Fireplace R/O / Adjust Powder Wall
- 11/7/08 - Add Details, Hour Bldgs & Gate Subj - Allow Gate Subj Window
- 11/19/07 - 1.5 Redline
- 12/11/07 - 5th Flr Detail
- 11/28/07 - Convert Windows to Storm Panels
- 11/19/07 - 1.5 Redline
- 10/22/07 - Review Floors & Trusses
- 10/19/07 - Review Foundation
- 10/9/07 - Update Fireplace Specs
- 10/5/07 - Flip to Garage Rpt
- 9/28/07 - Review Comments
- 8/30/07 - Update Windows